

Project Report
on
PASSWORD SAVER
(One key- offline password Manager)

*Submitted in partial fulfillment of the
requirement for the award of the degree of*

Bachelor of Technology in Computer Science and
Engineering



Under The Supervision
Dr S Jerald Nirmal Kumar
Associate Professor
Department of Computer Science and Engineering

Submitted By

18SCSE1010052 – VIBHU MISHRA

18SCSE1010083 – YASH GARG

SCHOOL OF COMPUTING SCIENCE AND ENGINEERING
DEPARTMENT OF COMPUTER SCIENCE AND ENGINEERING
GALGOTIAS UNIVERSITY, GREATER NOIDA, INDIA
DECEMBER - 2021



**SCHOOL OF COMPUTING
SCIENCE AND ENGINEERING
GALGOTIAS UNIVERSITY, GREATER NOIDA**

CANDIDATE'S DECLARATION

I/We hereby certify that the work which is being presented in the project, entitled “ **Password Saver:(one key offline password manager)**” in partial fulfillment of the requirements for the award of the **BACHELOR OF TECHNOLOGY IN COMPUTER SCIENCE AND ENGINEERING**

submitted in the **School of Computing Science and Engineering** of Galgotias University, Greater Noida, is an original work carried out during the period of **JULY-2021 to DECEMBER-2021**, under the supervision of **Mr. Dr S Jerald Nirmal Kumar, Associate Professor, Department of Computer Science and Engineering** of School of Computing Science and Engineering , Galgotias University, Greater Noida

The matter presented in the project has not been submitted by me/us for the award of any other degree of this or any other places.

18SCSE1010052 – VIBHU MISHRA

18SCSE1010083 – YASH GARG

This is to certify that the above statement made by the candidates is correct to the best of my knowledge.

Supervisor

(Mr Dr S Jerald Nirmal Kumar)

Associate Professor

CERTIFICATE

The Final Thesis/Project/ Dissertation Viva-Voce examination of **18SCSE1010052 – VIBHU MISHRA,** **18SCSE1010083 – YASH GARG** has been held on _____ and his/herwork is recommended for the award of **BACHELOR OF TECHNOLOGY IN COMPUTER SCIENCE AND ENGINEERING.**

Signature of Examiner(s)

Signature of Supervisor(s)

Signature of Project Coordinator

Signature of Dean

Date: Place:

Table of Contents

<u>Title</u>	<u>Page No</u>
Candidates Declaration	1
Table of Contents	3
Acknowledgement	4
Abstract	5
List of Tables	7
Introduction	8
UML Diagrams	10
Data Flow Diagrams	13
Source Code	23
Conclusion	51

ACKNOWLEDGEMENT

I have taken efforts in this project. However, it would not have been possible without the kind support and help of many individuals and organizations. I would like to extend my sincere thanks to all of them.

I am highly indebted to Mr. DR S Jerald Nirmal Kumar for their guidance and constant supervision as well as for providing necessary information regarding the project & also for their support in completing the project.

I would like to express my gratitude towards my parents & member of Galgotias University for their kind co-operation and encouragement which help me in completion of this project.

I would like to express my special gratitude and thanks to industry persons for giving me such attention and time.

My thanks and appreciations also go to my colleague Yash Garg in developing the project and people who have willingly helped me out with their abilities.

Vibhu Mishra

Abstract

Nowadays, everyone using internet for their fun, work and education. But all this information and media is available to us on different platforms which we access from our accounts which we created. If we are having only one or two accounts only, then it is very good for remembering only two or one username and password, but that is not the case. On an average we have more than tens of accounts and remembering username and password for each and every account is very distressing and confusing. Writing passwords in a diary or paper is also not that much safe, there will be always risk for loosing or leak of document.

To address the problem, we came to solution of using Password vaults or password managers. These are the programs that keep your passwords in a secure location. When

you use this software, the passwords are encrypted, and you use a single master password to access them. Depending on the tool being used, these passwords may be stored on a secure website, or on your local computer. In using it, you only need to remember one password to view the database of other passwords for various sites and apps.

List of Tables

S.No.	Title	Page No.
1	Problem Formulation	14
2	Tools and Technology Used	16
3	Literature Review	17
4	Authentication and passwords	19
5	Managing Multiple Passwords	20
6	Reference	53

Introduction

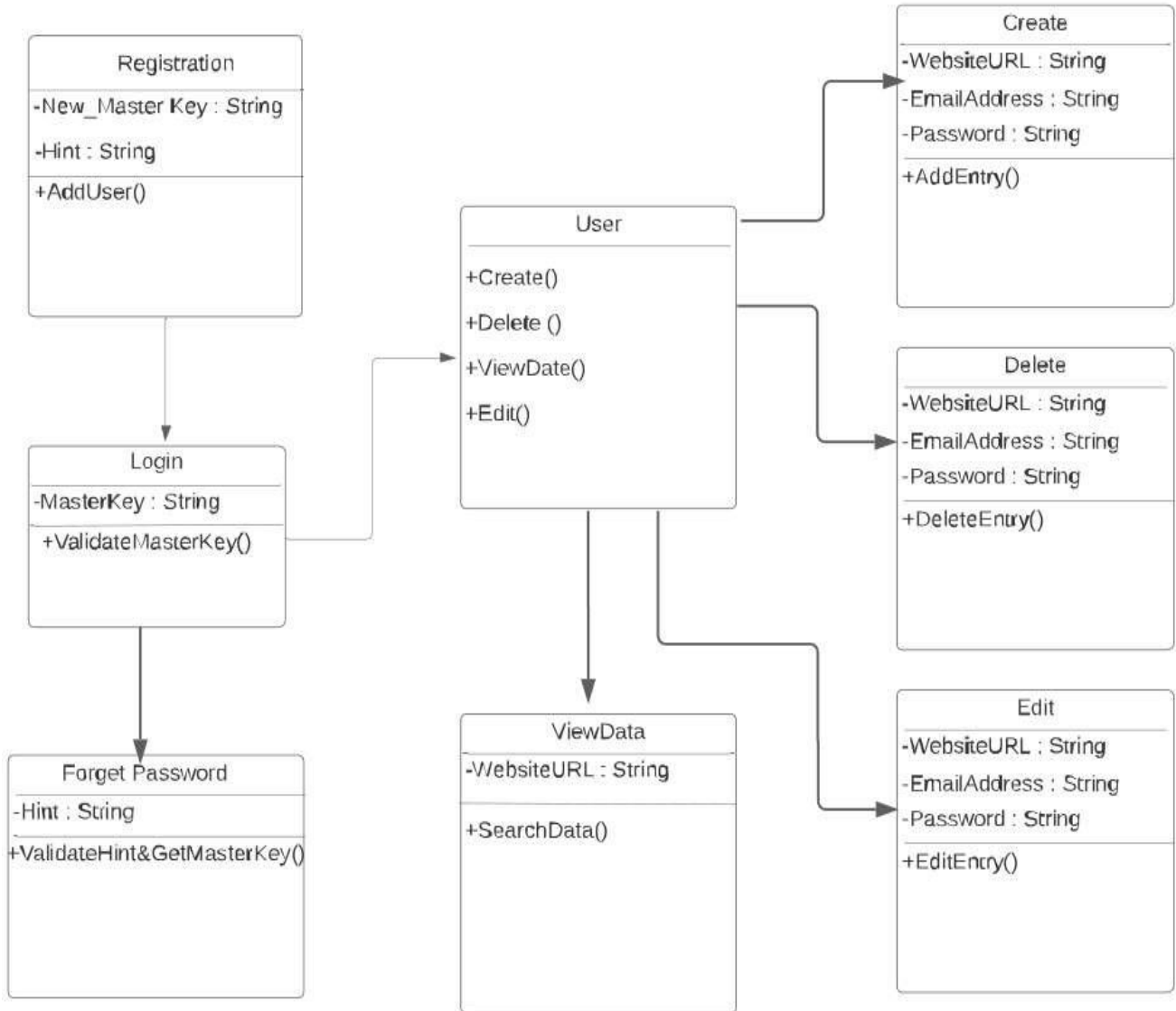
A **password manager** is a computer program that allows users to store, generate, and manage their passwords for local applications and online services.

A password manager assists in generating and retrieving complex passwords, storing such passwords in an encrypted database, or calculating them on demand.

Depending on the type of password manager used and, on the functionality, offered by its developers, the encrypted database is either stored locally on the user's device or stored remotely through an online file-hosting service. Password managers typically require a user to generate and remember one "master" password to unlock and access any information stored in their databases.

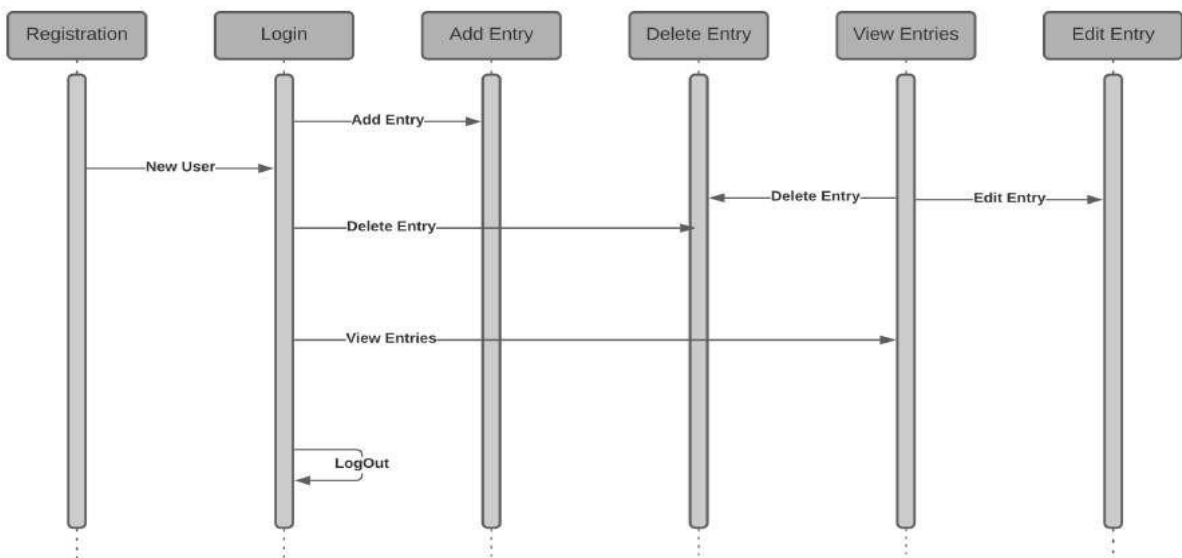
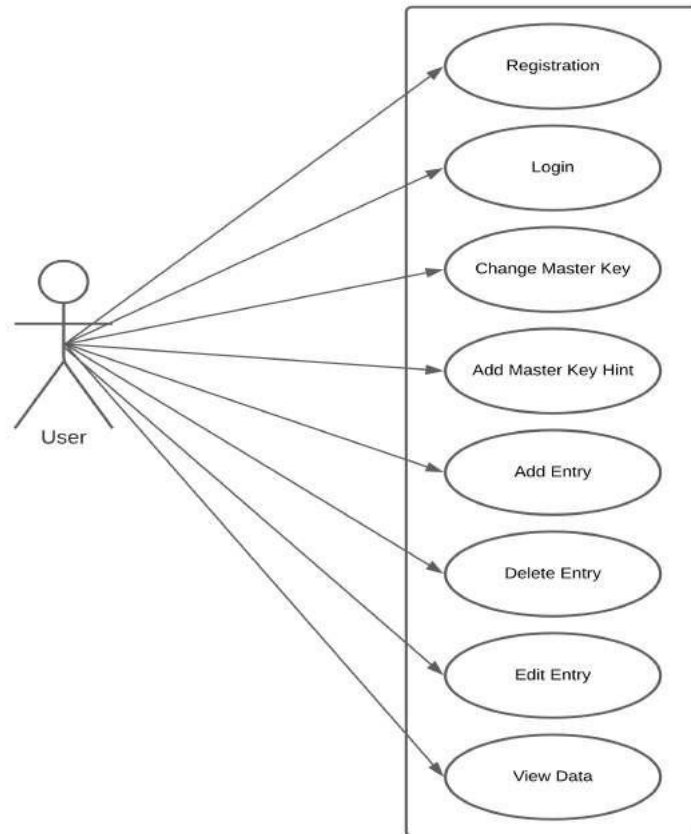
Password managers can also be used as a defense against phishing and pharming. Unlike human beings, a password manager program can also incorporate an automated login script that first compares the current site's URL to the stored site's URL. If the two do not match then the password manager does not automatically fill in the login fields. This is intended as a safeguard against visual imitations and look-alike websites.

UML Diagrams



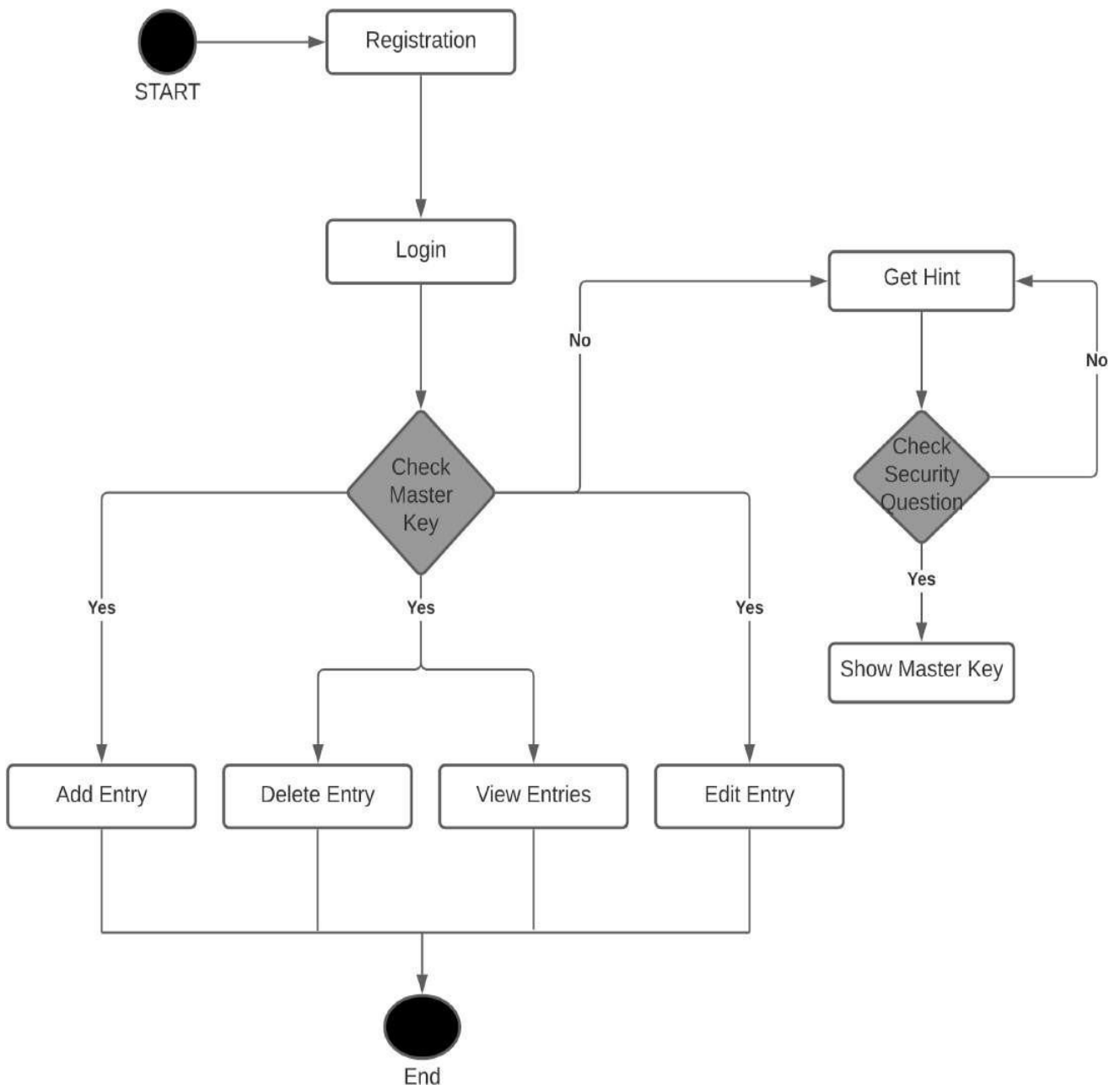
- *Class Diagram*

UML Diagrams



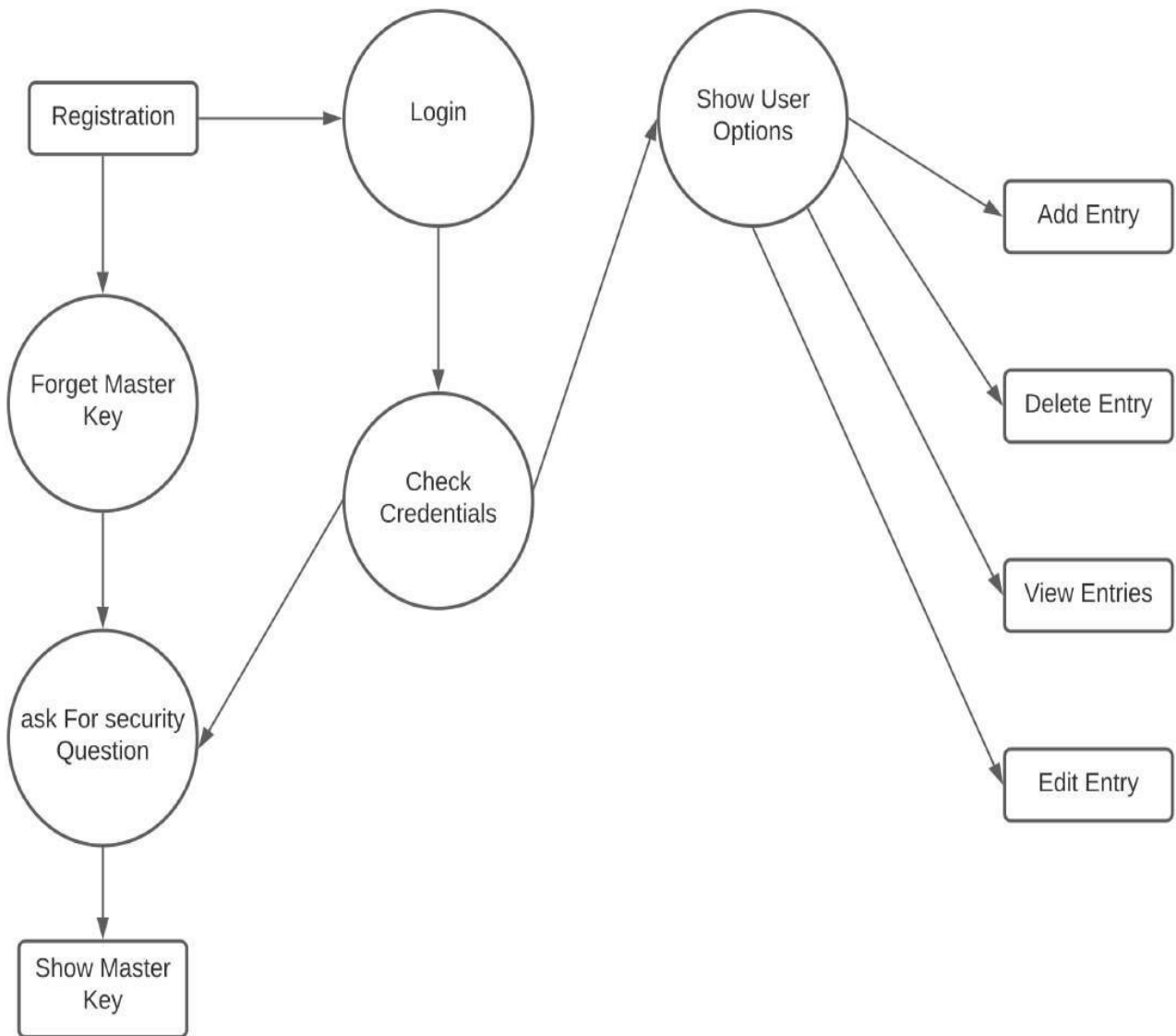
Sequence Diagram

UML Diagrams



- *Activity Diagram*

Data Flow Diagram



- *2nd Level Data Flow Diagram*

Problem Formulation

On an average we have more than tens of online accounts and remembering username and password for each and every account is very distressing and confusing.

More to this, there are also following problem given below:

- simple passwords – short in length, that use words found in dictionaries, or do not mix in different character types (numbers, punctuation, upper/lower case), or are otherwise easily guessable.
- passwords others can find – on sticky notes on monitors, in a notepad by the computer, in a document on the computer, whiteboard reminders, smart device storage in clear text, etc.
- the same password – using the same password for multiple sites, never changing account passwords, etc.

- shared passwords – users telling others passwords, sending unencrypted emails with password information, contractors using same password for all their accounts, etc.
- administrative account logins where limited logins would suffice, or
- administrators who allow users with the same role to use the same process.

Tools and Technology Used

- A laptop/pc having at least 8 GB of RAM so it can run smoothly.
- Windows XP, Windows 7, Windows 10
- Processor –i3, Hard Disk – 5 GB, Memory – 8 GB RAM
- Android Phone with KitKat and higher
- Require ANDROID STUDIO software for the development of this application.
- JAVA/KOTLINbasic knowledge for the back-end process.
- Pen drive Etc.

Literature Review

Information security and the CIA triad

Information security can be defined as protecting information with regard to three main requirements: confidentiality, integrity, and availability. Confidentiality meaning that unauthorized parties are not allowed to intercept the information. Integrity meaning that the information has not been corrupted or changed during storage or transmission by unauthorized parties. Availability meaning that information is available to the authorized parties when trying to access it.

This model is often referred to as the CIA triad.

Modern business needs have also increased the need for non-repudiation which means that an action, e.g. a business transaction, cannot be denied afterwards (Siponen & Oinas-Kukkonen, 2007).

Some has criticized the model of not including enough principles to ensure the information security of an organization. Dhillon and Backhouse proposed already in 2000 that the principles of responsibility, integrity (integrity of a person and not only information), trust and ethicality could be added to the model (Dhillon & Backhouse, 2000).

Another study proposes that authentication, access control, and non-repudiation should be added to the model (Simmonds, Sandilands, & Ekert, 2004).

Even though the CIA triad may not present the whole picture when it comes to information security there is consensus in the scientific community that confidentiality, integrity, and availability are key concepts in ensuring the security.

Authentication and passwords

Authentication can be divided into four categories; something the user knows, for example a password; something the user possesses, for example a smart card; something the user is, for example static biometrics like fingerprint sensor; something the user does, for example dynamic biometric like sound recognition (Stalling & Brown, 2015). Although there are many advanced and secure authentication methods – like biometrics and smart-cards – text-based passwords (often together with a username) that rely on what the user knows is still the most common type of authentication (Bonneau, Herley, van Oorschot, & Stajano, 2012). Because the user is involved in creating and managing these passwords, the biggest security issue with this type of authentication is the human factor (Furnell, Jushoh, & Katsabas, 2006).

Managing multiple passwords

Having multiple passwords can cause even more security issues with regard to security. Using the same or similar password on many different systems increases the risk of compromising the password on all systems if one is accidentally or intentionally shared (Duggan, Johnson, & Grawemeyer, 2012; Bang, Lee, Bae, & Ahn, 2012). If a password is forgotten both the lack of productivity and the cost of maintaining a service desk can be very costly to the organization (Duggan, Johnson, & Grawemeyer, 2012; Bonneau, Herley, van Oorschot, & Stajano, 2012). Another security issue is using weak passwords for easier memorability and other reasons (Hoonakker, Borneo, & Carayon, 2009).

Regardless of the comprehensiveness of the information security policy mismanaging passwords with reusing passwords, writing them down, and sharing them is still a big part of the everyday process (Grawemeyer & Hilary, 2011).

A strict security policy also poses the risks of backfiring when users circumvent security controls because they are simply too inconvenient (Adams & Sasse, 1999).

There are two primary factors that explains why users are not engaged in good password management; firstly, because they do not see the immediate threat and consequences to themselves; and secondly because good password management often decreases the convenience factor (Tam, Glassman, & Vandenwauver, 2010).

In summary multiple password environments creates security issues regarding:

- Weak passwords – using weak passwords, for example using known words and terms.
- Password reuse – using the same or similar password on more than one system.
- Password recovery – loss of productivity and cost of

- maintaining a service desk for password related issues.
- Password notes – writing down passwords to remember them, both electronic and on paper Password sharing – sharing passwords with friends and/or colleagues.

Using multiple passwords in an organizational context should (if possible) be avoided. Having users remember more than four to five passwords causes them to forget the password and therefore increasing the risk of engaging in poor password management behavior (Adams & Sasse, 1999)

<LinearLayout

xmlns:android="http://schemas.android.com/apk/res/android"

xmlns:app="http://schemas.android.com/apk/res-auto"

android:orientation="vertical"

android:layout_width="match_parent"

android:background="@color/transparent"

android:layout_height="match_parent">

<androidx.cardview.widget.CardView

android:layout_margin="8dp"

android:layout_width="match_parent"

app:cardCornerRadius="16dp"

android:layout_height="match_parent">

<ScrollView android:layout_width="match_parent"

android:layout_height="wrap_content">

<LinearLayout android:layout_width="match_parent"


```
android:padding="16dp" android:orientation="vertical"
android:layout_height="wrap_content">
<LinearLayout android:orientation="vertical"
android:visibility="visible" android:id="@+id/bmi_11"
android:layout_width="match_parent"
android:layout_height="wrap_content">
<TextView android:layout_width="wrap_content"
android:text="BMI Calculator"
android:layout_gravity="center_horizontal"
android:layout_marginTop="24dp" android:textSize="24sp"
android:textColor="@color/colorAccent"
android:layout_height="wrap_content"/>
<LinearLayout android:layout_margin="8dp"
android:background="@color/colorPrimary"
android:layout_width="match_parent"
```

```
android:layout_height="2dp"/>

<TextView android:layout_width="match_parent"
android:text="Height (in centimeter)"
android:layout_marginTop="34dp" android:textSize="16sp"
android:textColor="@color/colorBlack"

android:layout_height="wrap_content"/>

<EditText android:layout_width="match_parent"
android:layout_marginBottom="24dp"
android:id="@+id/bmi_height"
android:inputType="numberDecimal"
android:layout_height="wrap_content"/>

<TextView android:layout_width="match_parent"
android:text="Weight (in kilogram)" android:textSize="16sp"
```

```
android:textColor="@color/colorBlack"
android:layout_height="wrap_content"/>
<EditText android:inputType="numberDecimal"
android:layout_width="match_parent"
android:layout_marginBottom="24dp"
android:id="@+id/bmi_weight"
android:layout_height="wrap_content"/>
<Button android:layout_marginTop="44dp"
android:textColor="@color/colorWhite" android:textSize="18sp"
android:text="Calculate" android:id="@+id/bmi_calculate"
android:layout_marginBottom="24dp"
android:layout_width="match_parent"
android:background="@color/colorPrimary"
android:layout_height="wrap_content"/>
```

```
</LinearLayout>
```

```
<LinearLayout android:layout_width="match_parent"  
android:orientation="vertical" android:id="@+id/bmi_12"  
android:visibility="gone"  
android:layout_height="wrap_content">
```

```
<TextView android:layout_marginTop="16dp"  
android:layout_width="wrap_content" android:text="BMI  
Results" android:textSize="24sp"  
android:layout_gravity="center_horizontal"  
android:textColor="@color/colorPrimary"  
android:layout_height="wrap_content"/>
```

```
<LinearLayout android:layout_margin="8dp"  
android:background="@color/colorPrimary"  
android:layout_width="match_parent"  
android:layout_height="2dp"/>
```

```
<TextView android:layout_width="match_parent"
android:text="BMI Index" android:textSize="16sp"
android:layout_marginTop="34dp"
android:textColor="@color/colorBlack"
android:layout_height="wrap_content"/>
```

```
<TextView android:textSize="24sp" android:text="15.2"
android:id="@+id/bmi_index"
android:textColor="@color/colorAccent"
android:layout_width="match_parent"
android:layout_marginBottom="24dp"
android:layout_height="wrap_content"/>
```

```
<TextView android:layout_width="match_parent"
android:text="Category" android:textSize="16sp"
android:textColor="@color/colorBlack"
android:layout_height="wrap_content"/>
```

```
<TextView android:textSize="24sp"
```

```
android:id="@+id/bmi_category" android:text="Severely  
underweight"
```

```
android:textColor="@color/colorAccent"
```

```
android:layout_width="match_parent"
```

```
android:layout_marginBottom="8dp"
```

```
android:layout_height="wrap_content"/>
```

```
<TextView android:textSize="18sp"
```

```
android:id="@+id/bmi_info"
```

```
android:layout_width="match_parent"
```

```
android:layout_marginBottom="24dp"
```

```
android:layout_height="wrap_content"/>
```

```
<Button android:layout_marginTop="44dp"
```

```
android:textColor="@color/colorWhite" android:textSize="18sp"
```

```
android:text="Return" android:id="@+id/bmi_return"
```

```
android:layout_marginBottom="24dp"  
android:layout_width="match_parent"  
android:background="@color/colorPrimary"  
android:layout_height="wrap_content"/>
```

```
</LinearLayout>
```

```
</LinearLayout>
```

```
</ScrollView>
```

```
</androidx.cardview.widget.CardView>
```

```
</LinearLayout>
```

```
<LinearLayout
xmlns:android="http://schemas.android.com/apk/res/android"
xmlns:app="http://schemas.android.com/apk/res-auto"
android:orientation="vertical"
android:layout_width="match_parent"
android:background="@color/transparent"
android:layout_height="match_parent">
<androidx.cardview.widget.CardView
android:layout_margin="8dp"
android:layout_width="match_parent"
app:cardCornerRadius="16dp" android:paddingBottom="34dp"
android:layout_height="match_parent">
<ScrollView android:layout_width="match_parent"
android:layout_height="wrap_content">
<LinearLayout android:layout_width="match_parent"
android:padding="16dp" android:orientation="vertical"
```



```
android:layout_height="wrap_content">

<LinearLayout android:orientation="vertical"
android:visibility="visible" android:id="@+id/cal_11"
android:layout_width="match_parent"
android:layout_height="wrap_content">

<TextView android:layout_width="wrap_content"
android:text="Calorie Calculator"
android:layout_gravity="center_horizontal"
android:layout_marginTop="24dp" android:textSize="24sp"
android:textColor="@color/colorAccent"
android:layout_height="wrap_content"/>

<LinearLayout android:layout_margin="8dp"
android:background="@color/colorPrimary"
android:layout_width="match_parent"
android:layout_height="2dp"/>
```

```
<TextView android:layout_width="match_parent"
android:text="Exercise" android:layout_marginTop="34dp"
android:textSize="16sp" android:textColor="@color/colorBlack"
android:layout_height="wrap_content"/>
<Spinner android:layout_width="match_parent"
android:layout_marginBottom="24dp"
android:spinnerMode="dropdown"
android:id="@+id/cal_spinner" android:layout_height="34dp"/>
<TextView android:layout_width="match_parent"
android:text="Time (in minutes)" android:textSize="16sp"
android:textColor="@color/colorBlack"
android:layout_height="wrap_content"/>
<EditText android:id="@+id/cal_input_time"
android:inputType="numberDecimal"
android:layout_width="match_parent"
```

```
    android:layout_marginBottom="24dp"
    android:layout_height="wrap_content"/>
<Button android:layout_marginTop="44dp"
    android:textColor="@color/colorWhite" android:textSize="18sp"
    android:text="Calculate" android:id="@+id/cal_calculate"
    android:layout_marginBottom="24dp"
    android:layout_width="match_parent"
    android:background="@color/colorPrimary"
    android:layout_height="wrap_content"/>
</LinearLayout>
<LinearLayout android:layout_width="match_parent"
    android:orientation="vertical" android:id="@+id/cal_12"
    android:visibility="gone"
    android:layout_height="wrap_content">
<TextView android:layout_marginTop="16dp"
```

```
android:layout_width="wrap_content" android:text="Calorie  
Burned" android:textSize="24sp"  
android:layout_gravity="center_horizontal"  
android:textColor="@color/colorPrimary"  
android:layout_height="wrap_content"/>
```

```
<LinearLayout android:layout_margin="8dp"  
android:background="@color/colorPrimary"
```

```
android:layout_width="match_parent"  
android:layout_height="2dp"/>
```

```
<TextView android:layout_width="match_parent"  
android:text="Work" android:textSize="16sp"  
android:layout_marginTop="34dp"  
android:textColor="@color/colorBlack"  
android:layout_height="wrap_content"/>
```

```
<TextView android:textSize="24sp" android:text="Cycling"
android:id="@+id/cal_work"
android:textColor="@color/colorAccent"
android:layout_width="match_parent"
android:layout_marginBottom="24dp"
android:layout_height="wrap_content"/>

<TextView android:layout_width="match_parent"
android:text="Time" android:textSize="16sp"
android:textColor="@color/colorBlack"
android:layout_height="wrap_content"/>

<TextView android:textSize="24sp" android:id="@+id/cal_time"

android:text="50 Minutes"

android:textColor="@color/colorAccent"

android:layout_width="match_parent"

android:layout_marginBottom="24dp"
```

```
android:layout_height="wrap_content"/>

<TextView android:layout_width="match_parent"
android:text="Calorie Burned" android:textSize="16sp"
android:textColor="@color/colorBlack"
android:layout_height="wrap_content"/>

<TextView android:textSize="24sp" android:id="@+id/cal_burn"
android:text="226 CAL"
android:textColor="@color/colorAccent"
android:layout_width="match_parent"
android:layout_marginBottom="24dp"
android:layout_height="wrap_content"/>

<Button android:layout_marginTop="44dp"
android:textColor="@color/colorWhite" android:textSize="18sp"
android:text="Return" android:id="@+id/cal_return"
```

```
android:layout_marginBottom="24dp"
android:layout_width="match_parent"
android:background="@color/colorPrimary"
android:layout_height="wrap_content"/>
</LinearLayout>
</LinearLayout>
</ScrollView>
</androidx.cardview.widget.CardView>
</LinearLayout>
<LinearLayout
xmlns:android="http://schemas.android.com/apk/res/android"
xmlns:app="http://schemas.android.com/apk/res-auto"
android:orientation="vertical"
android:background="@color/transparent"
android:layout_width="match_parent"
```

```
android:layout_height="match_parent">  
  
<androidx.cardview.widget.CardView  
android:layout_width="match_parent"  
android:layout_height="match_parent"  
android:layout_margin="8dp" app:cardCornerRadius="16dp">  
  
<ScrollView android:layout_width="match_parent"  
android:layout_height="510dp">  
  
<LinearLayout android:layout_width="match_parent"  
android:layout_height="wrap_content"  
android:orientation="vertical" android:padding="16dp">  
  
<TextView android:layout_width="wrap_content"  
android:layout_height="wrap_content"  
android:layout_gravity="center_horizontal"  
android:layout_marginTop="2dp" android:text="Developed By"  
android:textColor="@color/colorAccent"
```



```
android:textSize="24sp"/>
```

```
<LinearLayout android:layout_width="match_parent"
```

```
android:layout_height="2dp" android:layout_margin="8dp"
```

```
android:background="@color/colorPrimary"/>
```

```
<TextView android:layout_width="match_parent"
```

```
android:layout_height="wrap_content"
```

```
android:layout_marginTop="20dp" android:text="1. Vibhu
```

```
Mishra" android:textColor="@color/colorBlack"
```

```
android:textSize="24sp"/>
```

```
<TextView android:layout_width="match_parent"
```

```
android:layout_height="wrap_content"
```

```
android:layout_marginStart="28dp"
```

```
android:layout_marginBottom="16dp"
```

```
android:text="18SCSE1010052"
```

```
android:textColor="@color/colorAccent"
```

```
android:textSize="18sp"/>

<LinearLayout android:layout_width="match_parent"
android:layout_height="2dp" android:layout_marginLeft="16dp"
android:layout_marginBottom="16dp"
android:background="@color/colorBlack80"/>

<TextView android:layout_width="match_parent"
android:layout_height="wrap_content" android:text="2. Shivang
Gupta" android:textColor="@color/colorBlack"
android:textSize="24sp"/>

<TextView android:layout_width="match_parent"
android:layout_height="wrap_content"
android:layout_marginStart="28dp"
android:layout_marginBottom="24dp"
android:text="18SCSE1010039"
android:textColor="@color/colorAccent"
```

```
android:textSize="18sp"/>
```

```
<LinearLayout android:layout_width="match_parent"
```

```
android:layout_height="2dp" android:layout_marginLeft="16dp"
```

```
android:layout_marginBottom="16dp"
```

```
android:background="@color/colorBlack80"/>
```

```
<TextView android:layout_width="match_parent"
```

```
android:layout_height="wrap_content" android:text="3.
```

```
Abhishek Dubey" android:textColor="@color/colorBlack"
```

```
android:textSize="24sp"/>
```

```
<TextView android:layout_width="match_parent"
```

```
android:layout_height="wrap_content"
```

```
android:layout_marginStart="28dp"
```

```
android:layout_marginBottom="24dp"
```

```
android:text="18SCSE1010427"
```

```
android:textColor="@color/colorAccent"
```

```
android:textSize="18sp"/>

<LinearLayout android:layout_width="match_parent"
android:layout_height="2dp" android:layout_marginLeft="16dp"
android:layout_marginBottom="16dp"
android:background="@color/colorBlack80"/>

<Button android:id="@+id/privacy"
android:layout_width="match_parent"
android:layout_height="71dp"
android:layout_marginTop="20dp"
android:layout_marginBottom="24dp"
android:background="@color/colorPrimary"
android:text="Privacy Policy"
android:textColor="@color/colorWhite"
android:textSize="18sp"/>

</LinearLayout>
```

</ScrollView>

</androidx.cardview.widget.CardView>

</LinearLayout>

<RelativeLayout

xmlns:android="http://schemas.android.com/apk/res/android"

xmlns:tools="http://schemas.android.com/tools"

android:layout_width="match_parent"

android:background="@drawable/backgroud_dark_blue"

android:layout_height="match_parent"

tools:context=".MainActivity">

<LinearLayout android:layout_width="match_parent"

android:orientation="vertical"

android:layout_marginBottom="64dp"

android:layout_height="match_parent">

<androidx.viewpager.widget.ViewPager

android:id="@+id/viewpager"

```
android:layout_width="match_parent"
android:layout_weight="1" android:layout_height="0dp"/>
<com.google.android.material.tabs.TabLayout
android:id="@+id/tabs" android:layout_width="match_parent"
android:background="@color/transparent"
android:layout_height="4dp"/>

</LinearLayout>

<LinearLayout android:background="@color/colorWhite"
android:layout_width="match_parent"
android:layout_alignParentBottom="true"
android:layout_height="64dp">

<TextView android:layout_gravity="center_vertical"
android:layout_width="0dp" android:id="@+id/m_t1"
android:layout_weight="1"
android:textColor="@color/colorAccent"
```

```
android:textSize="16sp" android:paddingTop="8dp"
android:paddingBottom="8dp" android:textStyle="bold"
android:gravity="center_horizontal"
android:drawableTop="@drawable/ic_bmi_24dp"
android:text="BMI" android:layout_height="wrap_content"/>
<TextView android:layout_gravity="center_vertical"
android:layout_width="0dp" android:id="@+id/m_t2"
android:layout_weight="1" android:paddingTop="8dp"
android:paddingBottom="8dp"
android:textColor="@color/colorBlack" android:textSize="16sp"
android:visibility="gone" android:textStyle="bold"
android:gravity="center_horizontal"
android:drawableTop="@drawable/ic_bmi_black_24dp"
android:text="BMI" android:layout_height="wrap_content"/>
```

```
<TextView android:layout_gravity="center_vertical"
android:layout_width="0dp" android:layout_weight="1"
android:textColor="@color/colorAccent"
android:textSize="16sp" android:paddingTop="8dp"
android:paddingBottom="8dp" android:textStyle="bold"
android:visibility="gone" android:id="@+id/m_t3"
android:gravity="center_horizontal"
android:drawableTop="@drawable/ic_whatshot_24dp"
android:text="Calorie" android:layout_height="wrap_content"/>
<TextView android:layout_gravity="center_vertical"
android:layout_width="0dp" android:layout_weight="1"
android:paddingTop="8dp" android:paddingBottom="8dp"
android:id="@+id/m_t4"
android:textColor="@color/colorBlack" android:textSize="16sp"
android:textStyle="bold" android:gravity="center_horizontal"
android:drawableTop="@drawable/ic_whatshot_black_24dp"
android:text="Calorie" android:layout_height="wrap_content"/>
```



```
<TextView android:layout_gravity="center_vertical"
android:layout_width="0dp" android:layout_weight="1"
android:textColor="@color/colorAccent"
android:textSize="16sp" android:paddingTop="8dp"
android:paddingBottom="8dp" android:textStyle="bold"
android:visibility="gone" android:id="@+id/m_t5"
android:gravity="center_horizontal"
android:drawableTop="@drawable/ic_info_24dp"
android:text="About Us"
android:layout_height="wrap_content"/>
```

```
<TextView android:layout_gravity="center_vertical"
android:layout_width="0dp" android:layout_weight="1"
android:paddingTop="8dp" android:paddingBottom="8dp"
android:id="@+id/m_t6"
android:textColor="@color/colorBlack" android:textSize="16sp"
android:textStyle="bold" android:gravity="center_horizontal"
android:drawableTop="@drawable/ic_info_black_24dp"
```

```
android:text="About Us"
```

```
android:layout_height="wrap_content"/>
```

```
</LinearLayout>
```

```
</RelativeLayout>
```

```
<LinearLayout
```

```
xmlns:android="http://schemas.android.com/apk/res/android"
```

```
xmlns:tools="http://schemas.android.com/tools"
```

```
android:layout_width="match_parent"
```

```
android:layout_height="match_parent"
```

```
android:orientation="vertical"
```

```
android:background="@drawable/backgroud_dark_blue"
```

```
tools:context=".LaunchActivity">
```

```
<ImageView android:layout_width="wrap_content"
```

```
android:layout_gravity="center_horizontal"
```

```
android:layout_weight="1"

android:src="@mipmap/ic_launcher_round"

android:layout_height="0dp"/>

<ProgressBar android:layout_width="wrap_content"

android:layout_gravity="center_horizontal"

android:layout_weight="1" android:layout_height="0dp"/>

<TextView android:layout_gravity="center_horizontal"

android:layout_width="wrap_content" android:textSize="34sp"

android:fontFamily="sans-serif"

android:layout_marginBottom="44dp"

android:textColor="@color/colorWhite"

android:text="@string/app_name"

android:layout_height="wrap_content"/>

</LinearLayout>
```

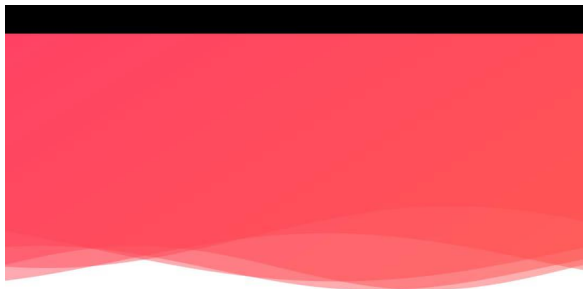
Conclusion

We have successfully completed the project with the guidance of Mr Dr S Jerald Nirmal Kumar. It was good to learn under his guidance and we got to learn many new things.

Result

The project has been successfully executed and completed.

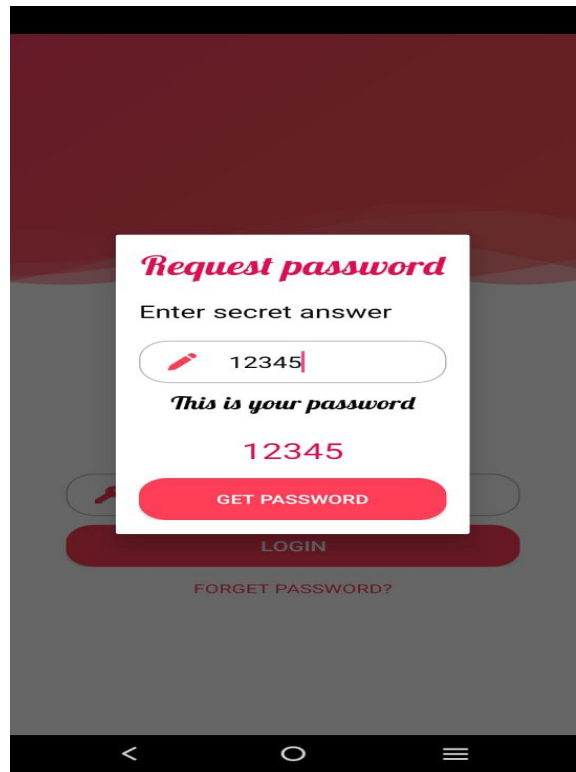
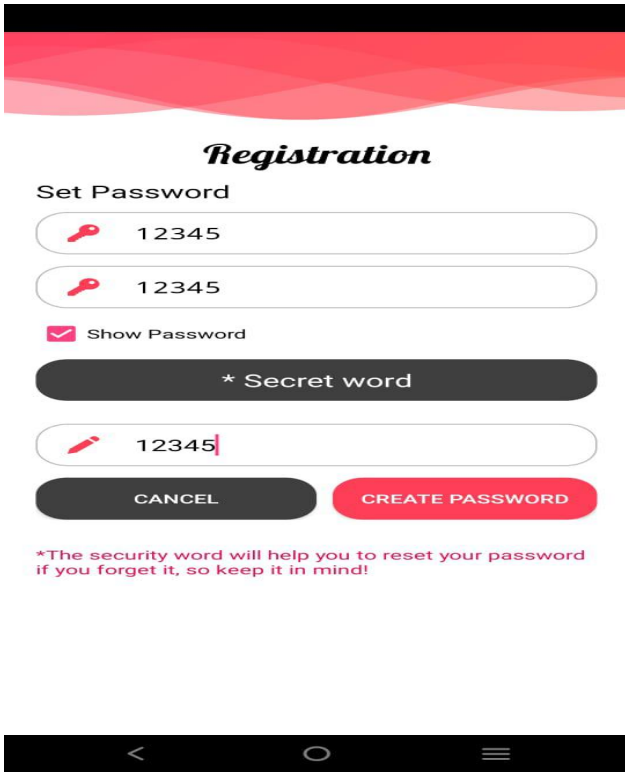
Outcomes



Login Page

Don't have account? [SignUp](#)





Save Your Password

Enter Your data

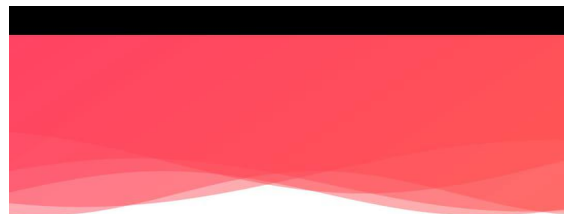
www.google.com

zxcvb@gmail.com

qwerty

Show Password

SAVE



Welcome to Password Recorder!

INSERT YOUR DATA

SHOW YOUR DATA

DELETE YOUR DATA



References

1. Eran Gabber, Phillip B. Gibbons, Yossi Matias, and Alain J. Mayer. How to make personalized web browsing simple, secure, and anonymous. In Proceedings of Financial Cryptography'97, pages 17–32, Anguilla, West Indies, February 1997.
2. A. Halderman, B. Waters, and E. Felten. A convenient method for securely managing passwords. In Proceedings of the 2005 World Wide Web Conference, pages 471–479, Chiba, Japan, May 2005.
3. Robert Morris and Ken Thompson. Password security: a case history. *Commun. ACM*, 22(11):594–597, 1979.
4. Jeff Yan, Alan Blackwell, Ross Anderson, and Alasdair Grant. Password memorability and security: Empirical results. *IEEE Security and Privacy*, 2(5):25–31, 2004.
5. Anne Adams and Martina Angela Sasse. Users are not the enemy. *Commun. ACM*, 42(12):40–46, 1999.

6. Siber Systems. Roboform password manager, 2009. Available at <http://www.roboform.com>.
7. Blake Ross, Collin Jackson, Nick Miyake, Dan Boneh, and John C. Mitchell. Stronger password authentication using browser extensions. In USENIX Security Symposium, 2005.
8. LastPass. Lastpass password manager, 2009. Available at <https://lastpass.com>.
9. Mozilla Labs. Weave sync, 2009. Available at <http://labs.mozilla.com/projects/weave>.
10. D. Reichl. Keepassmobile, 2009. Available at <http://www.Keepassmobile.com>.
11. Openintents safe, 2009. Available at <http://www.openintents.org/en/node/205>.
12. Sonia Chiasson, P. C. van Oorschot, and Robert Biddle. A usability study and critique of two password managers. In USENIX Security Symposium, 2006.

13. R. Dhamija and L. Dusseault. The seven flaws of identity 2008

14. Handypassword.

http://www.handypassword.com/login_password_manager_terms/usb_password_manager.shtml.

15. Pc magazine: Password managers & form fillers.

<http://www.pcmag.com/article2/0,2817,1791459,00.asp>.

16. Password management software review 2009. [http://](http://password-management-software-review.toptenreviews.com/)

password-management-software-review.toptenreviews.com/.