The logo of Galgotias University is a stylized 'G' composed of several curved, overlapping bands in shades of yellow, orange, and blue, set against a light pink circular background.

Topic- Gender Empowerment Unit-1

GALGOTIAS
UNIVERSITY

Main Points

- Meaning and Definition of Empowerment
- Gender Empowerment
- Attributes of Gender Empowerment
- Gender empowerment Measures
- Challenges to gender Empowerment
- Strategies to gender Empowerment

Empowerment

Oxford dictionary- has defined empowerment as ‘the process of becoming stronger and more confident ,especially in controlling one’s life and claiming one’s rights”.

World Bank- “ Empowerment is the process of increasing the capacity of individuals or groups to make choices and to transform those choices into desired actions and outcomes.”

GALGOIAS
UNIVERSITY

Empower

Empower means to enable to allow or to permit and can be conceived as both self initiated and initiated by others.

GALGOTIAS
UNIVERSITY

Empowerment

Process of enabling people to set their own work –related goals, make decisions and solve problems within their sphere of responsibility and authority.

- **Has been one of the primary procedural issue while addressing human rights and development.**

One of the main concern in the Human development and capabilities approach ,
The millennium development Goals and other credible approaches /goals

- **Necessary step to overcome the obstacles of poverty and development.**

UNIVERSITY

Refers to the empowerment of the people irrespective of their gender.

- Conventionally gender empowerment has been reduced to the women empowerment, yet it mainly stress on the distinction between biological sex and gender as a role

Attributes of Empowerment

A moving state

A continuum that varies in degree of power

Relative concept- one can move from extreme state (lack of power to- having absolute power)

Refers to the ability to control one's environment

Includes granting authorities for certain important decision

Gaining autonomy for setting one's own goals and priorities is empowerment

- It encompasses economic , political and social decision making powers

Indicates bestowing resources for utilization at one's discretion

UNIVERSITY

Gender Empowerment Measures (GEM)

- An index designed to measure the gender equality in a country.
- GEM is the UN development Programme's attempt to measure the extent of gender inequality across the countries of the world, based on estimates of women's relative economic power and access to professional and parliamentary positions.
- It was introduced in 1995

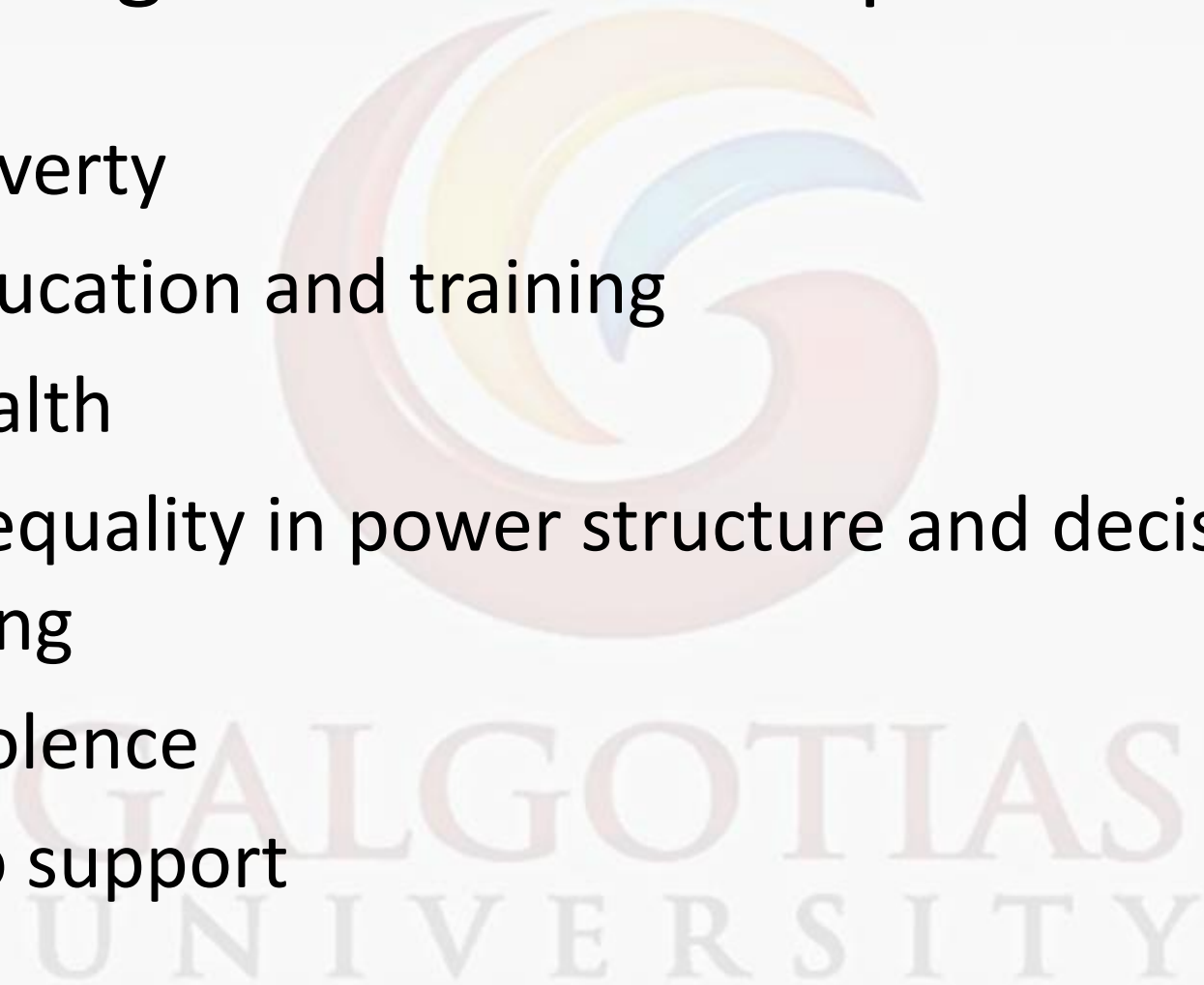
- GEM is calculated by tracking “ the share of seats in parliament held by women, of female legislators”, senior officials and managers; and of female profession and technical workers and the gender disparity in the earned income, reflecting economic independence.
- India’s present ranking is 139 on this scale in world

- Gender empowerment reflects improvements in the standard of living and well being to women. It is calculated by combining economic and political indicators. It is measured in GEM
- Highest GEM are northern Europe , North America, South Pacific
- Lowest Gem- African and Asian countries

- Gender/ women empowerment means helping women to become stronger and more confident , especially in controlling one's life and claiming one's rights.
- Achieving gender equality requires women empowerment to ensure decision making at private and public level, access to resources no longer weighted in men's favour so that both can fully participate as equal partners in productive life.

Challenges to Gender empowerment

- 1. Poverty
- 2. Education and training
- 3. Health
- 4. Inequality in power structure and decision making
- 5. Violence
- 6. No support



Strategies for Gender empowerment

1. Use of media for portraying positive image of women
2. Promotion of self respect and self dignity for girls
3. Financial assistance to poverty stricken families
4. Abolishment of child labour, dowry, early marriage and caste system
5. Serious effort must be initiated jointly by govt, parents and civil society to ensure girls enrollment in school.

School of Education

Course Code : BEDU2003

Course Name: Gender, School and Society

- 6. Counseling of parents of children belonging to poor and underprivileged families.
- 7. Through awareness building on social issues , bringing attitudinal change, promotion of skill training for employment, providing information in health care , nutrition, hygiene and legal rights.
- 8. Gender sensitive education

References

- Makol ,Rajesh(2018). Gender, school and society, Kalamandir, Delhi.
- Nandra,I.,Gaur and Batra (2020).Gender, School and Society,Twenty First Century Publications,Patiyala, Punjab.
- Thiyagu, K. (2016) Gender, School, Society And Inclusive School, Bharathidasan University, Tiruchirappalli .