

A Project Report on
Data Analysis using ML on
Geolocational Data

*Submitted in partial fulfillment of the
requirement for the award of the degree of*

Bachelor of Technology in Computer Science and Engineering



(Established under Galgotias University Uttar Pradesh Act No. 14 of 2011)

Under the Supervision of

Dr . J.N. Singh

Assistant Professor

Department of Computer Science and Engineering

Submitted By :

Gourang Ajmera - 18SCSE1010669

Alok Singh - 18SCSE1010135

**SCHOOL OF COMPUTING SCIENCE AND ENGINEERING, DEPARTMENT
OF COMPUTER SCIENCE AND ENGINEERING ,GALGOTIAS
UNIVERSITY, GREATER NOIDA, INDIA DECEMBER - 2021**

Project Title: DATA ANALYSIS USING ML ON GEOLOCATIONAL

DATA



**SCHOOL OF COMPUTING SCIENCE AND
ENGINEERING**
GALGOTIAS UNIVERSITY, GREATER NOIDA

CANDIDATE'S DECLARATION

We hereby certify that the work which is being presented in the project, entitled “**CAPSTONE PROJECT- DATA ANALYSIS ON ML USING GEOLOCATIONAL DATA**” in partial fulfillment of the requirements for the award of the B.Tech CSE submitted in the School of Computing Science and Engineering of Galgotias University, Greater Noida, is an original work carried out during the period of August 2022 to May 2022, under the supervision of Dr. J.N Singh, Professor, Department of Computer Science and Engineering/Computer Application and Information and Science, of School of Computing Science and Engineering, Galgotias University, Greater Noida

The matter presented in the project has not been submitted by us for the award of any other degree of this or any other places.

Alok Singh 18SCSE1010235

Gourang Ajmera 18SCSE1010669

This is to certify that the above statement made by the candidates is correct to the best of my knowledge.

Supervisor Name

Designation

CERTIFICATE

The Final Thesis/Project/ Dissertation Viva-Voce examination of Name: Alok Singh & Gourang Ajmera with Admission Nos – 18SCSE1010135 & 18SCSE1010669 respectively has been held on _____ and his/her work is recommended for the award of Name of Degree – B.Tech

Signature of Examiner(s)

Signature of Supervisor(s)

Signature of Project Coordinator

Signature of Dean

Date:

Place: Greater Noida

ABSTRACT:

Machine learning allows us to feed computer algorithms with large amounts of data and make computers analyze and make data-driven decisions and recommendations based solely on input data. This project will utilize ML to analyze geolocational data and user preferences to make smart recommendations to the user . In the fast-paced and busy environment that the average person lives in, it often happens that one is too tired to prepare a home-cooked meal. And of course, even if you get home cooked meals every day, it is not uncommon for you to want to have a good meal every now and then for social / recreational purposes. Now, imagine a scenario where someone has just moved to a new location. They already have certain preferences, certain tastes. It will save a lot of trouble for the student and food suppliers if the student lives near his favorite outlet. The convenience of the means better sales and time savings for customers. This project involves the utilization of K-Means Clustering to seek out the simplest accommodation for students in Bangalore (or the other city of your choice) by classifying accommodation for incoming students on the idea of their preferences on amenities, budget and proximity to the location.

Keywords:

. *ML*

. *Unsupervised Learning*

. *Simulation*

. *Smart Recommendations*

. *Data-driven approach*

Introduction:

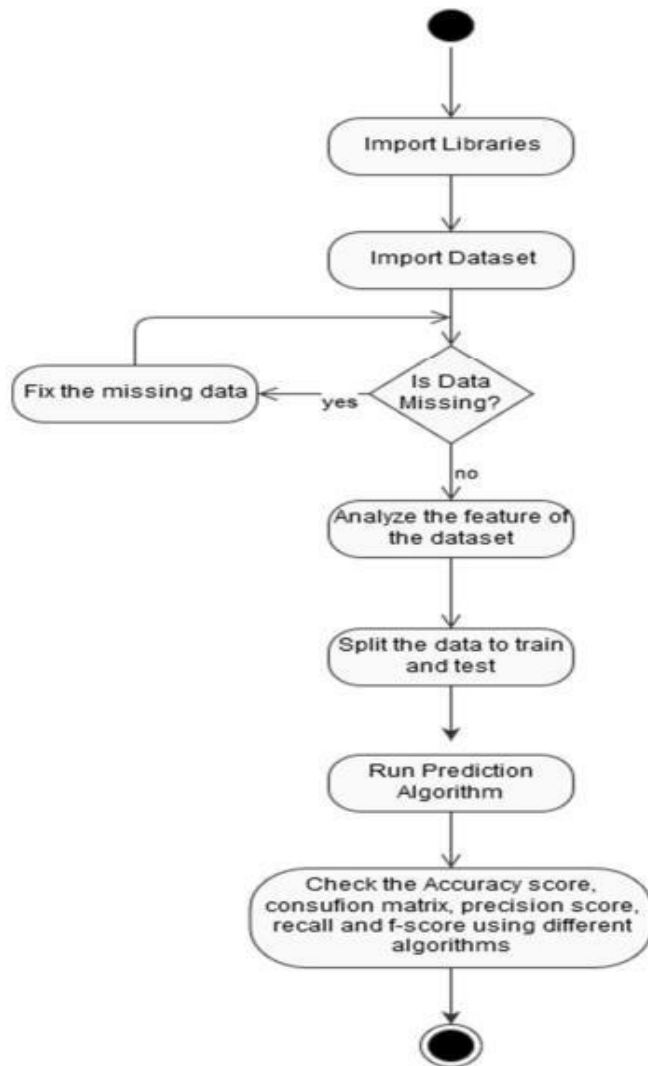
In the fast-paced and busy environment where the average person lives, it is common for people to be too tired to prepare home-cooked meals. And of course, even if you eat homemade food every day, it's not unusual if you want to go out to eat once in a while for social/recreational purposes. However, it is a commonly understood idea that no matter where you live, the food you eat is an important aspect of the lifestyle you live. Now, imagine a scenario where someone has just moved to a new location. They already have certain preferences, certain tastes.

This will save students a lot of trouble and food suppliers if the student lives near his or her favorite outlet. This project involves using K-Means Clustering to find the best accommodation for students in Bangalore (or another city of your choice) by rating accommodation for incoming students based on their preferences on facilities, budget and proximity to location.

Literature Review:

There are many algorithms derived above to determine k automatically. Most of these methods are wrappers around k means or some other clustering algorithm for fixed k . Use the wrapper method divide and combine the rules for centers to increase or decrease the value of k as the algorithm progresses. After calculating the BIC or Bayesian Information Criterion (BIC is a method for scoring and selecting a model) for each clustering model. Apart from BIC, other scoring functions are also available. Some researchers use the MDL method to find the best k . The researchers also used the Minimum Description Length (MDL) framework, where the description length is the measurement value that tells us how well the data fit the model. This algorithm starts with a large value for k and removes the center (reduces k) each time that selection reduces the length of the description. Among the k reduction steps, they used the k means algorithm to optimize the fit of the model to the data.

Activity Diagram:



Required tools:

- Python
- For data - numpy and pandas package.
- For plotting - matplotlib package & seaborn packages
- For geospatial - geopy, folium.

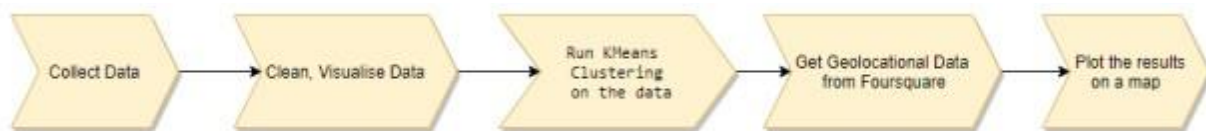
- For machine learning - sklearn (preprocessing and cluster) scipy,
- For deep learning - minisom

Feasibility Analysis:

The project Data Analysis using ML on Geolocational Data is a simple software application which is supported on a personal computer , just like any native application. It is a python based project with the renowned python libraries to manage the application. For an application as complex as an recommendation system using machine learning and AI , this software has simplistic approach and does not have many complex features therefore, it can be used at the bare-bones level. Sklearn (preprocessing and cluster) , scipy , matplotlib & seaborn packages , pandas packages for python are the other packages that we will be using in this application. Python provides us with many different features and services to complete our project. The convenient design of the geopy package for the plotting on map and the simple user experience will provide smooth and good experience to the user.

Complete work plan layout:

The development of this application software will follow an iterative software development model in which the base product is first implemented as a small set of software requirements, then iterative enhancements and development releases are made until the entire system is implemented and ready for deployment. The first step would be collection of data set followed by visualizing the data. Then imposing K-Means clustering algorithm on the data. Get geolocal data from the resulting data-set and further plotting it on the map.



Modeling and Prediction with Machine Learning -

The main goal of the entire project is to predict the occurrence of heart disease with the highest accuracy. To achieve this, we will test several classification algorithms.

This section covers all the results obtained from the study and introduces the best performer according to the accuracy metric. We have chosen a number of specific algorithms to solve supervised learning problems across classification methods.

First, let's arm ourselves with a handy tool that benefits from the coherence of the SciKit Learn library and creates a common task for training our models. The

reason we display accuracy on both the train and test sets is to allow us to evaluate whether the model overfits or underfits the data.

Logistic regression –

Logistic regression is a classification algorithm used to assign observations to a discrete set of classes. Unlike linear regression, which outputs continuous number values, logistic regression uses the logistic sigmoid function to transform its output to return a probability value that can then be mapped to two or more discrete classes.

Types of Logical Regression:

- binary (pass/fail)
- multi (cats, dogs, sheep)

Process -

1. Split the problem into an $n+1$ binary classification problem (+1 because the index starts at 0).
2. For each class...

3. Estimate the probability that the observations will be in that single class. 4.

$$\text{prediction} = \max(\text{probability of classes})$$

Accuracy score of Logistic Regression is: 85.25%

Random Forest –

Random Forest is a supervised learning algorithm. Random forest can be used for both classification and regression problems, by using random forest regressor we can use random forest on regression problems. But we have used random forest on classification in this project so we will only consider the classification part.

Random Forest pseudocode –

- Randomly select “k” features from total “m” features.

Where $k \ll m$

- Among the “k” features, calculate the node “d” using the best split point.
- Split the node into daughter nodes using the best split.
- Repeat 1 to 3 steps until “l” number of nodes has been reached.

- Build forest by repeating steps 1 to 4 for “n” number times to create “n” number of trees.

Random forest prediction pseudocode –

1. Takes the test features and use the rules of each randomly created decision tree to predict the outcome and stores the predicted outcome.
2. Calculate the votes for each predicted target.
3. Consider high voted predicted target as final prediction from random forest algo.

Accuracy score of Random Forest is 86.9%

Naïve Bayes -

Bayes’ Theorem is stated as:

$$\mathbf{P(h|d) = (P(d|h) * P(h)) / P(d)}$$

- $P(h|d)$ is the probability of hypothesis h given the data d . This is called the posterior probability.

- $P(d|h)$ is the probability of data d given that the hypothesis h was true.
- $P(h)$ is the probability of hypothesis h being true (regardless of the data).
This is called the prior probability of h .
- $P(d)$ is the probability of the data (regardless of the hypothesis).

Here, we are interested in calculating the posterior probability of $P(h|d)$ from the prior probability $p(h)$ with $P(D)$ and $P(d|h)$. After calculating the posterior probability for a number of different hypotheses, we will select the hypothesis with the highest probability. This is the maximum probable hypothesis and may formally be called the (MAP) hypothesis.

This can be written as:

$$\text{MAP}(h) = \max(P(h|d))$$

Or

$$\text{MAP}(h) = \max((P(d|h) * P(h)) / P(d))$$

Or

$$\text{MAP}(h) = \max(P(d|h) * P(h))$$

The $P(d)$ is a normalizing term which allows us to calculate the probability. We can drop it when we are interested in the most probable hypothesis as it is constant and only used to normalize. Back to classification, if we have an even number of instances in each class in our training data, then the probability of each class (e.g., $P(h)$) will be equal. Again, this would be a constant term in our equation, and we could drop it so that we end up with -

$$\text{MAP}(h) = \max(P(d|h))$$

Naive Bayes is a classification algorithm for binary (two-class) and multi-class classification problems. The technique is easiest to understand when described using binary or categorical input values. It is called naive Bayes or idiot Bayes because the calculation of the probabilities for each hypothesis are simplified to make their calculation tractable. Rather than attempting to calculate the values of each attribute value $P(d_1, d_2, d_3|h)$, they are assumed to be conditionally independent given the target value and calculated as $P(d_1|h) * P(d_2|h)$ and so on.

This is a very strong assumption that is most unlikely in real data, i.e. that the attributes do not interact. Nevertheless, the approach performs surprisingly well on data where this assumption does not hold.

$$\text{MAP}(h) = \max(P(d|h) * P(h))$$

Gaussian Naïve Bayes -

$$\text{mean}(x) = 1/n * \text{sum}(x)$$

Where n is the number of instances and x are the values for an input variable in your training data. We can calculate the standard deviation using the following equation - $\text{standard deviation}(x) = \sqrt{1/n * \text{sum}(x_i - \text{mean}(x))^2}$

This is the square root of the average squared difference of each value of x from the mean value of x , where n is the number of instances, $\text{sqrt}()$ is the square root function, $\text{sum}()$ is the sum function, x_i is a specific value of the x variable for the i th instance and $\text{mean}(x)$ is described above, and 2 is the square. Gaussian PDF

with a new input for the variable, and in return the Gaussian PDF will provide an estimate of the probability of that new input value for that class.

$$\text{pdf}(x, \text{mean}, \text{sd}) = (1 / (\text{sqrt}(2 * \text{PI}) * \text{sd})) * \exp(-((x-\text{mean}^2) / (2*\text{sd}^2)))$$

Where pdf(x) is the Gaussian Probability Density Function (PDF), sqrt () is the square root, mean and sd are the mean and standard deviation calculated above, Pi is the numerical constant, exp () is the numerical constant e or Euler's number raised to power and x is the input value for the input variable.

K-Nearest Neighbor –

We can implement a KNN model by following the below steps:

1. Load the data
2. Initialize the value of k
3. For getting predicted class, iterate from 1 to total number of training data points.

- Calculate the distance between test data and each row of training data. Here we will use Euclidean distance as our distance metric since it's the most popular method. The other metrics that can be used are Chebyshev, cosine, etc.
- Sort the calculated distances in ascending order based on distance values.
- Get top k rows from the sorted array.
- Get the most frequent class of these row.
- Return the predicted class.

Pseudocode -

- Place the best attribute of the dataset at the root of the tree.
- Split the training set into subsets. Subsets should be made in such a way that each subset contains data with the same value for an attribute.
- Repeat step 1 and step 2 on each subset until you find leaf nodes in all the branches of the tree.

Assumptions while creating Decision Tree –

- At the beginning, the whole training set is considered as the root.
- Feature values are preferred to be categorical. If the values are continuous then they are discretized prior to building the model.
- Records are distributed recursively on the basis of attribute values.
- Order to placing attributes as root or internal node of the tree is done by using some statistical approach.
- The popular attribute selection measures -
 1. Information gain
 2. Gini index

Minimum System Requirements –

Processors - Intel Atom® processor or Intel® Core™ i3 processor

Disk space - 3 GB or more

Operating systems - Windows 7 /8.1/ 10, OSX-10.8+

Python* versions - 2.7.X, 3.6.X

HDD: 3 GB free space / May vary for different data-sets

Source Code:

```
<a href="https://colab.research.google.com/github/AKG1301/Exploratory-Data-Analysis-on-Geolocational-Data/blob/main/Exploratory_Data_Analysis_on_Geolocational_Data.ipynb" target="_parent"></a>
```

```
#Exploratory Analysis of Geolocational Data
```

```
## Data Collection import pandas as pd
```

```
data=pd.read_csv("/content/drive/MyDrive/ Exploratory Analysis of Geolocational Data/food_coded.csv") data
```

#Data Cleaning

The process of Extracting the features, (and dealing with different kinds of values as well as NaN values) is known as Data Cleaning.

```
data.columns column=['cook','eating_out','employment','ethnic_food',  
'exercise','fruit_day','income','on_off_campus','pay_meal_out','sports','veggies_day'  
]
```

```
d=data[column] d
```

Data Exploration and Visualisation

```
import seaborn as sns sns.pairplot(d) #Boxplot of  
Dataset import numpy as np import pandas as pd  
import matplotlib.pyplot as plt % matplotlib  
inline ax=d.boxplot(figsize=(16,6))  
ax.set_xticklabels(ax.get_xticklabels(),rotation=30)  
d.shape s=d.dropna()  
## Run KMeans Clustering on the data  
## for data import  
numpy as np import
```

```
pandas as pd ## for
plotting import
matplotlib.pyplot as
plt import seaborn
as sns ## for
geospatial import
folium import
geopy ## for
machine learning
from sklearn import
preprocessing,
cluster import scipy
## for deep
learning import
minisom
f=['cook','income']
X = s[f] max_k =
10 ## iterations
distortions = [] for
i in range(1,
```

```

max_k+1): if
len(X) >= i:
    model = cluster.KMeans(n_clusters=i, init='k-means++', max_iter=300,
n_init=10, random_state=0)    model.fit(X)
distortions.append(model.inertia_) ## best k: the lowest derivative k =
[i*100 for i in np.diff(distortions,2)].index(min([i*100 for i    in
np.diff(distortions,2)]))
## plot fig, ax = plt.subplots() ax.plot(range(1,
len(distortions)+1), distortions) ax.axvline(k, ls='--',
color="red", label="k = "+str(k)) ax.set(title="The Elbow
Method', xlabel='Number of clusters',
ylabel="Distortion") ax.legend() ax.grid(True) plt.show()

## Get Geolocational Data from
pandas.io.json import json_normalize
import folium

from geopy.geocoders import Nominatim import
requests

CLIENT_ID =
"KTCJJ2YZ2143QHEZ2JAQS4FJIO5DLSDO0YN4YBXPMI5NKTEF" # your

```

Foursquare ID

CLIENT_SECRET =

"KNG2LO22BPLHN1E3OAHWLYQ5PQBN14XYZMEMAS0CPJEJKOTR" #

your Foursquare Secret

VERSION = '20200316' LIMIT

= 10000

url =

'https://api.foursquare.com/v2/venues/explore?&client_id={ }&client_secret={ }&v

={ }&ll={ },{ }&radius={ }&limit={ }'.format(

CLIENT_ID,

CLIENT_SECRET,

VERSION,

17.448372, 78.526957,

30000, LIMIT) results =

requests.get(url).json() results

venues =

results['response']['groups'][0]['

items'] nearby_venues =

json_normalize(venues)

Adding two more Columns Restaurant and Others

1. Restaurant: Number of Restaurant in the radius of 20 km
2. others: Number of Gyms, Parks, etc in the radius of 20 km

```
resta=[] oth=[] for lat,long in
```

```
zip(nearby_venues['venue.location.lat'],nearby_venues['venue.location.lng']):
```

```
url =
```

```
'https://api.foursquare.com/v2/venues/explore?&client_id={ }&client_secret={ }&v
```

```
={ }&ll={ },{ }&radius={ }&limit={ }'.format(
```

```
CLIENT_ID,
```

```
CLIENT_SECRET,
```

```
VERSION,
```

```
lat,long,
```

```
1000,
```

```
100)
```

```
res = requests.get(url).json() venue =
```

```
res['response']['groups'][0]['items']
```

```
nearby_venue = json_normalize(venue)
```

```
df=nearby_venue['venue.categories']
```



```

g=[] for i in
range(0,df.size):
    g.append(df[i][0]['icon']['prefix'].find('food'))
co=0 for i in g: if i>1: co+=1
resta.append(co) oth.append(len(g)-co)

```

```

nearby_venues['restaurant']=resta

```

```

nearby_venues['others']=oth

```

```

nearby_venues ## Changing the

```

Column Name

```

lat=nearby_venues['venue.location.lat']

```

```

long=nearby_venues['venue.location.l

```

```

ng']

```

```

## Install the minisom library using pip

```

MiniSom is a minimalistic and Numpy based implementation of the Self

Organizing Maps (SOM). SOM is a type of Artificial Neural Network able to convert complex, nonlinear statistical relationships between high-dimensional data items into simple geometric relationships on a low-dimensional display. Minisom

is designed to allow researchers to easily build on top of it and to give students the ability to quickly grasp its details.

```
pip install minisom
```

```
## Run K Means clustering on the dataset, with the optimal K value using Elbow  
Method
```

A fundamental step for any unsupervised algorithm is to determine the optimal number of clusters into which the data may be clustered. The Elbow Method is one of the most popular methods to determine this optimal value of k.

```
f=['venue.location.lat','venue.location.lng']
```

```
X = nearby_venues[f] max_k = 10
```

```
## iterations
```

```
distortions = [] for i in
```

```
range(1, max_k+1): if
```

```
len(X) >= i:
```

```
    model = cluster.KMeans(n_clusters=i, init='k-means++', max_iter=300,
```

```
    n_init=10, random_state=0)    model.fit(X)
```

```
    distortions.append(model.inertia_) ## best k: the lowest derivative k =
```

```
    [i*100 for i in np.diff(distortions,2)].index(min([i*100 for i    in
```

```
    np.diff(distortions,2)]))
```

```
## plot fig, ax = plt.subplots() ax.plot(range(1,
len(distortions)+1), distortions) ax.axvline(k, ls='--',
color="red", label="k = "+str(k)) ax.set(title="The Elbow
Method', xlabel='Number of clusters',
ylabel="Distortion") ax.legend() ax.grid(True) plt.show() city
= "Hyderabad"

## get location locator =
geopy.geocoders.Nominatim(user_agent="MyCoder") location
= locator.geocode(city) print(location)

## keep latitude and longitude only location =
[location.latitude, location.longitude]

print("[lat, long]:", location)

nearby_venues.head() nearby_venues.columns

##Data Cleaning Process for Extracting Necessary Columns in the Dataset
n=nearby_venues.drop(['referralId', 'reasons.count', 'reasons.items', 'venue.id',
'venue.name',
'venue.location.labeledLatLngs', 'venue.location.distance',
'venue.location.cc',
'venue.categories', 'venue.photos.count', 'venue.photos.groups',
'venue.location.crossStreet', 'venue.location.address', 'venue.location.city',
```

```

'venu.e.location.state', 'venue.location.crossStreet',
'venu.e.location.neighborhood', 'venue.venuePage.id',
'venu.e.location.postalCode', 'venue.location.country'], axis=1)
n.columns

## Dropping Nan Values from Dataset n=n.dropna() n =
n.rename(columns={'venue.location.lat': 'lat', 'venue.location.lng': 'long'}) n
### Convert Every Row of Column ***'venue.location.formattedAddress'*** from
List to String n['venue.location.formattedAddress'] spec_chars = ["[", ","] for char
in spec_chars:
    n['venue.location.formattedAddress'] =
n['venue.location.formattedAddress'].astype(str).str.replace(char, ' ')
#Plot the clustered locations on a map x, y
= "lat", "long" color = "restaurant" size =
"others" popup =
"venue.location.formattedAddress" data =
n.copy()

## create color column

```

```

lst_colors=["red","green","orange"] lst_elements
= sorted(list(n[color].unique()))

## create size column (scaled) scaler =
preprocessing.MinMaxScaler(feature_range=(3,15))
data["size"] = scaler.fit_transform(
data[size].values.reshape(-1,1)).reshape(-1)

## initialize the map with the starting location map_ =
folium.Map(location=location, tiles="cartodbpositron",
            zoom_start=11)

## add points data.apply(lambda row:
folium.CircleMarker(
location=[row[x],row[y]],popup=row[popup],
radius=row["size"]).add_to(map_), axis=1) X =
n[["lat","long"]] max_k = 10 ## iterations
distortions = [] for i in range(1, max_k+1):

    if len(X) >= i:
        model = cluster.KMeans(n_clusters=i, init='k-means++', max_iter=300,
n_init=10, random_state=0)    model.fit(X)

```

```

distortions.append(model.inertia_) ## best k: the lowest derivative k =
[i*100 for i in np.diff(distortions,2)].index(min([i*100 for i in
np.diff(distortions,2)]))

## plot fig, ax = plt.subplots() ax.plot(range(1,
len(distortions)+1), distortions) ax.axvline(k, ls='--',
color="red", label="k = "+str(k)) ax.set(title="The Elbow
Method', xlabel='Number of clusters',
ylabel="Distortion") ax.legend() ax.grid(True) plt.show()

k = 6 model = cluster.KMeans(n_clusters=k, init='k-
means++') X = n[["lat", "long"]] ## clustering dtf_X =
X.copy() dtf_X["cluster"] = model.fit_predict(X)

## find real centroids closest, distances =
scipy.cluster.vq.vq(model.cluster_centers_,
dtf_X.drop("cluster", axis=1).values) dtf_X["centroids"] = 0

for i in closest:
    dtf_X["centroids"].iloc[i] = 1

## add clustering info to the original dataset

n[["cluster", "centroids"]] = dtf_X[["cluster", "centroids"]] n ## plot
fig, ax = plt.subplots() sns.scatterplot(x="lat", y="long", data=n,

```

```

palette=sns.color_palette("bright",k),          hue='cluster',
size="centroids", size_order=[1,0],          legend="brief",
ax=ax).set_title('Clustering (k='+str(k)+'') th_centroids =
model.cluster_centers_

ax.scatter(th_centroids[:,0], th_centroids[:,1], s=50, c='black',
marker="x") model = cluster.AffinityPropagation()

k = n["cluster"].nunique() sns.scatterplot(x="lat", y="long",
data=n,          palette=sns.color_palette("bright",k),
hue='cluster', size="centroids", size_order=[1,0],
legend="brief").set_title('Clustering (k='+str(k)+'') x, y = "lat",
"long" color = "cluster" size = "restaurant" popup =
"venue.location.formattedAddress" marker = "centroids" data =
n.copy() ## create color column lst_elements =
sorted(list(n[color].unique())) lst_colors = ['#%06X' %
np.random.randint(0, 0xFFFFFFFF) for i in
range(len(lst_elements))] data["color"] =
data[color].apply(lambda x:
lst_colors[lst_elements.index(x)])

```

```

## create size column (scaled) scaler =
preprocessing.MinMaxScaler(feature_range=(3,15))
data["size"] = scaler.fit_transform(
data[size].values.reshape(-1,1)).reshape(-1) ## initialize the
map with the starting location map_ =
folium.Map(location=location, tiles="cartodbpositron",
            zoom_start=11)
## add points data.apply(lambda row:
folium.CircleMarker(location=[row[x],row[y]],
color=row["color"], fill=True,popup=row[popup],
radius=row["size"]).add_to(map_), axis=1)
## add html legend legend_html = """<div style="position:fixed; bottom:10px;
left:10px; border:2px solid black; z-index:9999; font-
size:14px;">&nbsp;<b>"""+color+""":</b><br>"" for i in lst_elements:
    legend_html = legend_html+""&nbsp;<i class="fa fa-circle fa-
1x" style="color:"""+lst_colors[lst_elements.index(i)]+"""">
    </i>&nbsp;"""+str(i)+"" <br>""
legend_html = legend_html+""</div>""
map_.get_root().html.add_child(folium.Element(legend_html))

```



```

## add centroids marker lst_elements =
sorted(list(n[marker].unique()))

data[data[marker]==1].apply(lambda row:

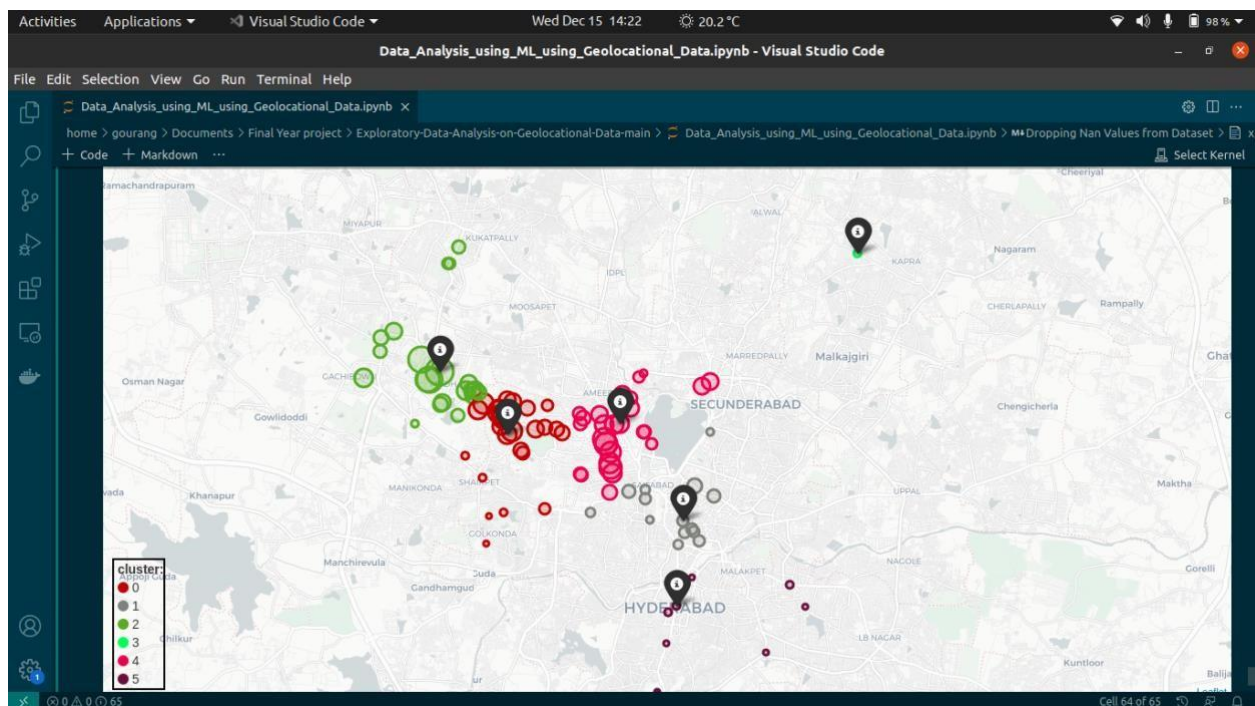
    folium.Marker(location=[row[x],row[y]],

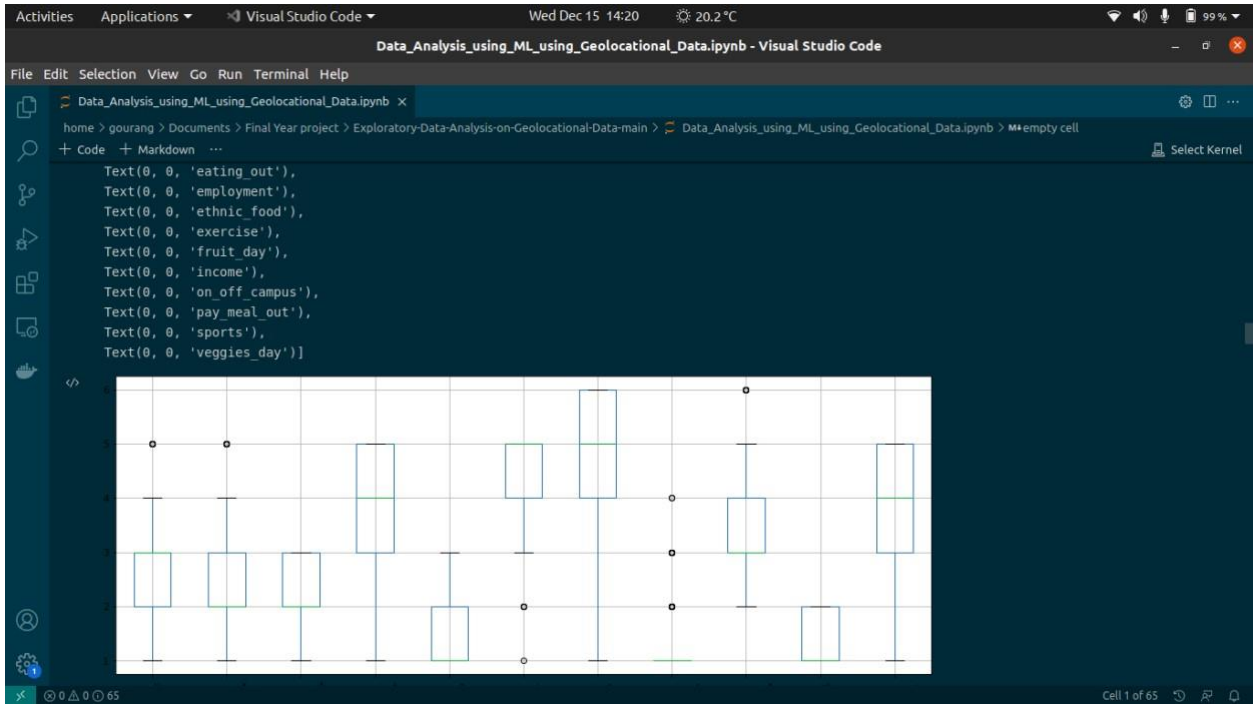
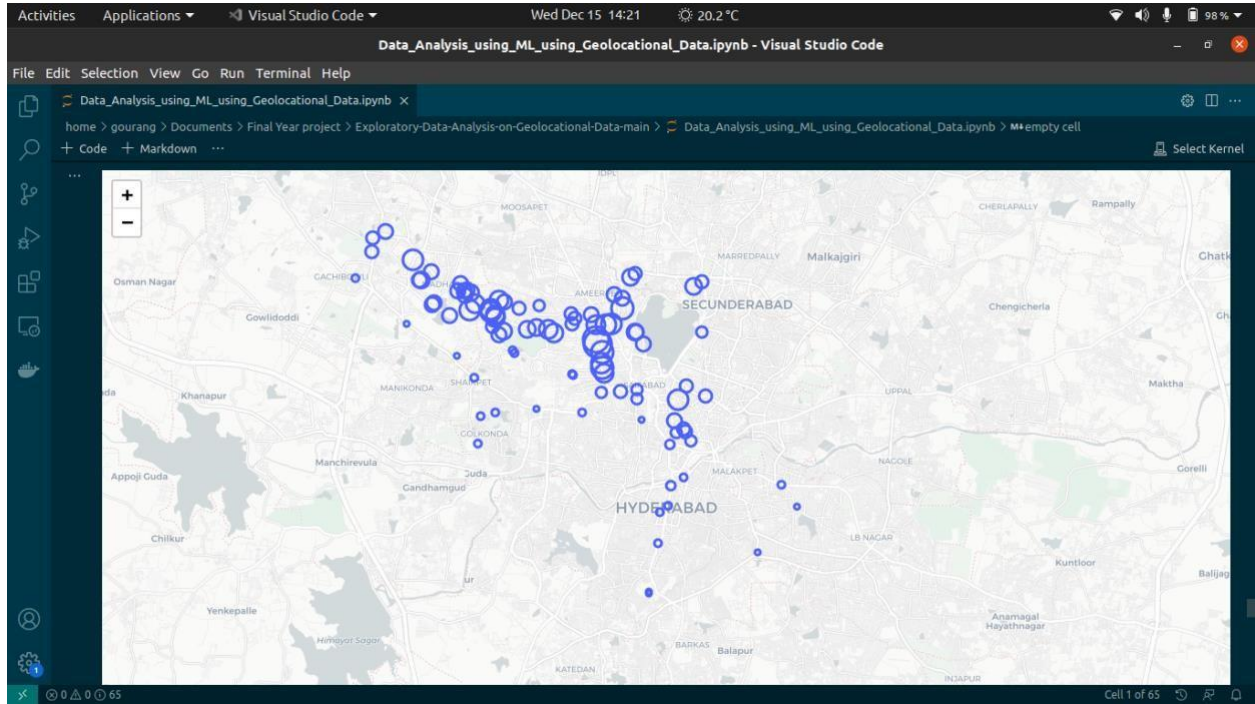
draggable=False,                popup=row[popup]                ,

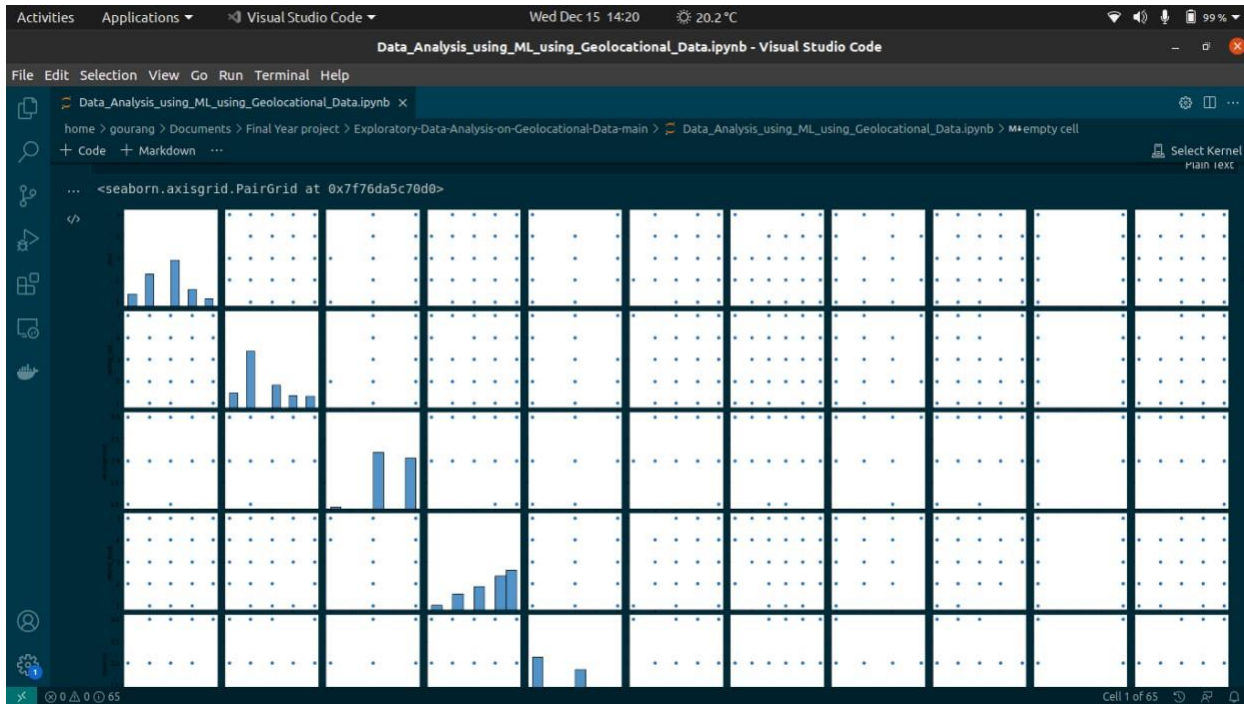
icon=folium.Icon(color="black")).add_to(map_),                axis=1)

```

Results:







GROUP ID- BT4122

Team Members:

GOURANG AJMERA

**(18SCSE1010669, 18021011893,
gourang_ajmera.scsebtech@galgotiasuniversity.edu.in)**

ALOK SINGH

**(18SCSE1010135,18021011382,
alok_singh.scsebtech@galgotiasuniversity.edu.in)**

Citations and References

- [1] Bao, Jie & Zheng, Yu. (2017). Location-Based Recommendation Systems. 10.1007/978-3-319-17885-1_1580.
- [2] Li, Youguo & Wu, Haiyan. (2012). A Clustering Method Based on K-Means Algorithm. Physics Procedia. 25. 1104-1109. 10.1016/j.phpro.2012.03.206.
- [3] S. Na, L. Xumin and G. Yong, "Research on k-means Clustering Algorithm: An Improved k-means Clustering Algorithm," 2010 Third International Symposium on Intelligent Information Technology and Security Informatics, 2010, pp. 63-67, doi: 10.1109/IITSI.2010.74.
- [4] C.S. ReVelle, H.A. Eiselt, Location analysis: A synthesis and survey, European Journal of Operational Research, Volume 165, Issue 1, 2005, ISSN 0377-2217,
- [5] Barnes, T. J. (2003) 'The place of locational analysis: a selective and interpretive history', Progress in Human Geography, 27(1), pp. 69–95. doi:
- [6] Rajesh Kumar, D., & Shanmugam, A. (2017). A Hyper-Heuristic Localization Based Cloned Node Detection Technique Using GSABased Simulated Annealing in. In Cognitive Computing for Big Data Systems Over IoT (pp. 307–335). Springer International Publishing.
- [7] Prasanth, T., Gunasekaran, M., & Kumar, D. R. (2018, December). Big data Applications. 2018 4th International Conference on Computing Communication and Automation (ICCCA). 2018 4th International Conference on Computing Communication and Automation (ICCCA).

[8] Al-Omary, Alauddin & Jamil, Mohammad. (2006). A new approach of clustering based machine-learning algorithm. Knowledge-Based Systems. 19.

248-258. 10.1016/j.knosys.2005.10.011.

[9]Rajesh Kumar D, & Manjupriya S. (2013, December). Cloud based M-Healthcare emergency using SPOC. 2013 Fifth International Conference on Advanced

Computing (ICoAC). 2013 Fifth International Conference on Advanced Computing (ICoAC).

[10] Rodriguez MZ, Comin CH, Casanova D, Bruno OM, Amancio DR, Costa LdF, et al. (2019) Clustering algorithms: A comparative approach. PLoS

ONE 14(1): e0210236.

[11]Soumya Ranjan Jena, Raju Shanmugam, Rajesh Kumar Dhanaraj, Kavita Saini Recent Advances and Future Research Directions in Edge Cloud Framework.

(2019). International Journal of Engineering and Advanced Technology, 9(2), 439–444.

[12]Lalitha,K.,Kumar,D.R.,Poongodi,C.,&Arumugam,J.(2021).ToolsandTechnologies.In Blockchain,Internet of Things, and Artificial

Intelligence (pp. 331–348). Chapman and Hall/CRC.

[13] Çelik, Özer. (2018). A Research on Machine Learning Methods and Its Applications. 10.31681/jetol.457046

[14]Dhanaraj, R. K. (2020, November 5). Machine learning based Pedantic Analysis of Predictive Algorithms in Crop Yield Management. 2020 4th International

ConferenceonElectronics,CommunicationandAerospaceTechnology(ICECA).2020 4thInternationalConferenceon Electronics,Communicationand Aerospace

Technology (ICECA).

[15]Dhanaraj, R. K., Rajkumar, K., & Hariharan, U. (2020). Enterprise IoT Modeling: Supervised, Unsupervised, and Reinforcement Learning. In Business Intelligence

for Enterprise Internet of Things(pp. 55–79). Springer International Publishing.

[16]Cynthia,J.,Sankari,M.,Suguna,M.,&kumar,D.R.(2018,December).SurveyonDisasterManagementusingVANET.20184thInternationalConference

on Computing Communication and Automation (ICCCA). 2018 4th International Conference on Computing Communication and Automation (

ICCCA).

[17]Dhanaraj,R.K.,Shanmugam,A.,Palanisamy,C.,&Natarajan,A.(2016).OptimalClonAttackDetectionModelusinganEnergy-EfficientGSAbased

Simulated

AnnealinginWirelessSensorNetworks.AsianJournalofResearchinSocialSciencesand Humanities,6(11),201.

[18]Sathya,K.,&Kumar,D.R.(2012,February).Energyefficient clusteringinsensornetworksusingClusterManager.2012InternationalConferenceon

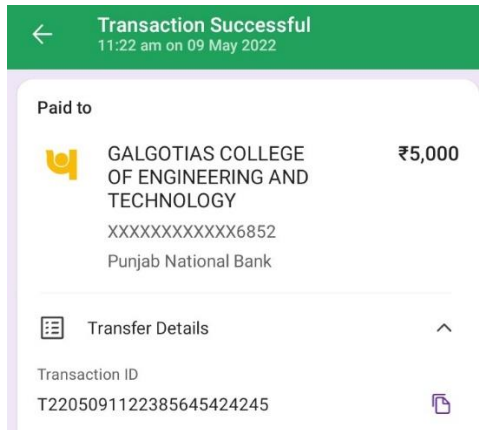
Computing, Communication and Applications. 2012 International Conference on Computing, Communication and Applications(ICCCA).

[19]Lalitha, K., Varadhaganapathy, S., Santhoshi, S., & Kumar, D. R. (2017, August). A Literature Review of Spatial Location Analysis for Retail Site Selection

. 2017 Journal of the Association for Information Systems(J ASSOC INF SYST)

Publisher: Association for Information Systems

Publication/ Screen Shots



From: **Dr Vishnu Sharma** <icac3n22@gmail.com>
Date: Mon, 9 May 2022 at 13:04
Subject: Registration Confirmation 4th IEEE **ICAC3N-22**
To: <icac3n22@gmail.com>

Dear Author,

Greetings !!!

Thank you for completing your registration process. We have received your fee and registration details.

The Details of Paper ID and Title are as given below.

For further updates please keep visiting the conference website www.icac3n.in or for any query write to us at icac3n2@gmail.com.

Regards:
Organizing committee
ICAC3N - 22



Microsoft CMT <email@msr-cmt.org>
to me ▾

Thu, May 5, 2:29 PM (6 days ago) ★ ↶ ⋮

Dear Author,

Greetings from Galgotias College of Engineering and Technology!!!

On behalf of the 4th ICAC3N-22 Program Committee, I am delighted to inform you that the submission of "Paper ID- 27 " titled " Data Analysis using ML on Geolocational Data " has been accepted for presentation at the ICAC3N- 22 and will be sent for the submission in the conference proceedings to be published by the IEEE.

Please complete your registration by clicking on the following Link: <https://forms.gle/8acy23i3UbtwLkFXA> on or before 20 May 2022.

Note:

1. Final camera ready copy must be strictly in IEEE format.
2. Minimum paper length should be 5 pages.
3. If plagiarism is found at any stage in your accepted paper, the registration will be cancelled and paper will be rejected and the authors will be responsible for any consequences.
4. Registration fee once paid will be non refundable.

Regards.